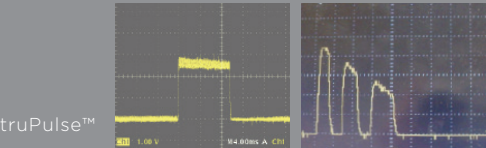


Proven Innovation

Long-pulsed 1064 nm Nd:YAG is considered the safest wavelength for hair removal in skin types IV-VI^{1,2}



truPulse™—the only true long-pulse Nd:YAG to deliver consistent and sustained energy throughout the pulse duration

Sapphire contact cooling is superior for laser hair removal—index matching and compression efficiently heats target structures while pre, parallel, and post cooling spares the epidermis³

The only high-power Alexandrite/Nd:YAG laser hair removal workstation with sapphire contact cooling

Recognized performance for the treatment of leg veins

Versatile and acclaimed Nd:YAG clinical utility

	Alexandrite	truPulse™—Nd:YAG
Wavelength	755 nm	1064 nm
Max Energy	53 J	80 J
Pulse Duration	3 ms	0.1 - 300 ms
Treatment Spot Size	5-18 mm, Zoom	3-12 mm, Zoom
Repetition Rate	Single Shot to 2 Hz	Single Shot to 10 Hz
Epidermal Cooling	Cold Sapphire, Adjustable 4 - 20°C	
Aiming Beam	635 nm	
Dimensions	35" H, 12" W, 24" D	
Weight	185 Lbs.	
Electrical	200-240 VAC, 50/60 Hz, 20A/30A	

Explore More.

Introduce your patients to 21st century hair removal with **excel HR™**

Contact your local CUTERA representative today.

888 4-CUTERA • www.cutera.com

CUTERA®

CUTERA, INC. WORLD HEADQUARTERS
3240 Bayshore Boulevard • Brisbane, California 94005 USA
P: 888 4-CUTERA or 415 657 5500 • F: 415 330 2444

BUILT FOR THE 21ST CENTURY PRACTICE

excel HR™
21st century hair removal

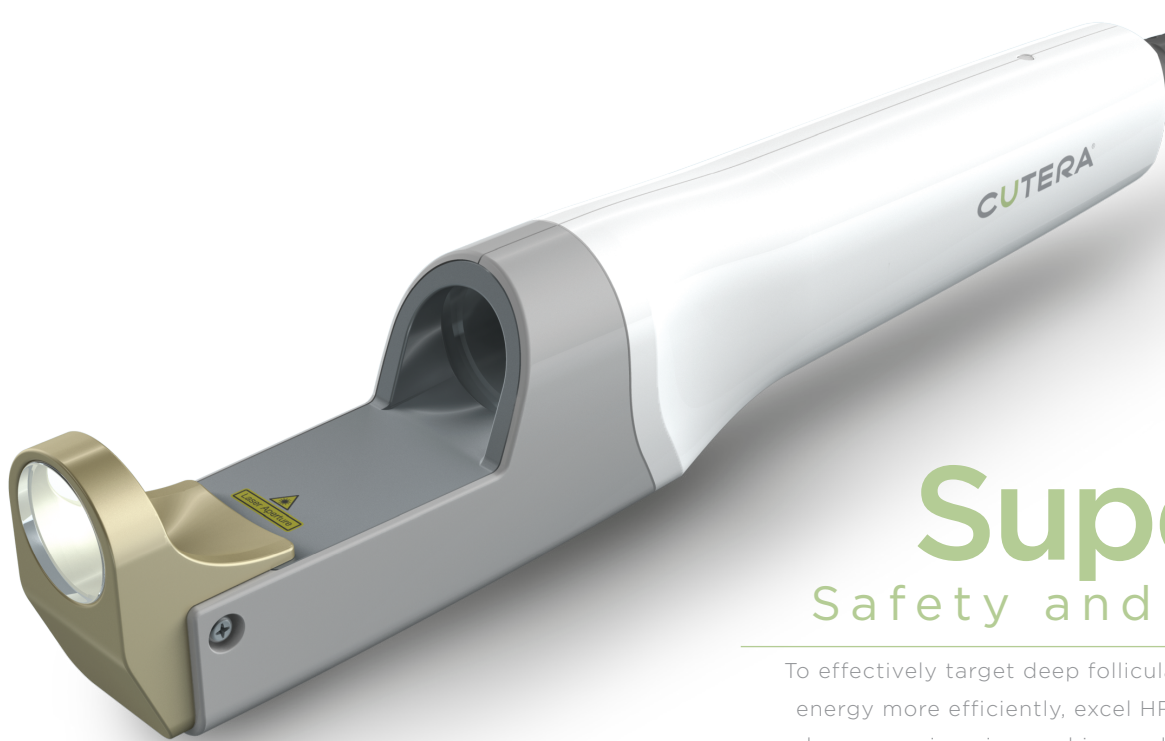
1. Wanner M. Dermatol Ther 2005; 18(3):209-216 ; 2. Battle EF Jr. J Drugs Dermatol 2011; 10(11):1235-9 ; 3. Zenzie HH et al. Lasers Surg Med 2000; 26(2): 130-144 ; 4. Zenzie HH et al. Lasers Surg Med 2000; 26(2): 130-144

Another First

from the Pioneer and Leader
in Nd:YAG laser technology

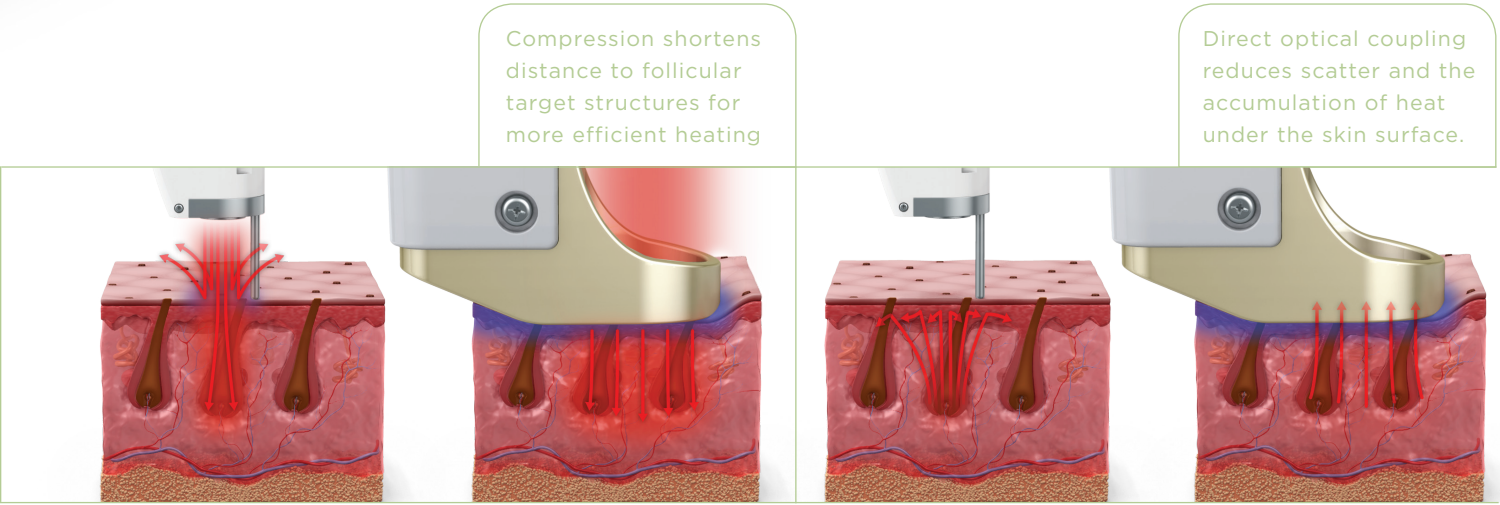
excel HR™ combines high-power 755 nm Alexandrite and the wide-range versatility of proven 1064 nm Nd:YAG with the superiority of sapphire contact cooling to offer the most advanced premium hair removal solution for all skin types.

excel HR—redefining safe, effective and comfortable laser hair removal for the 21st century.



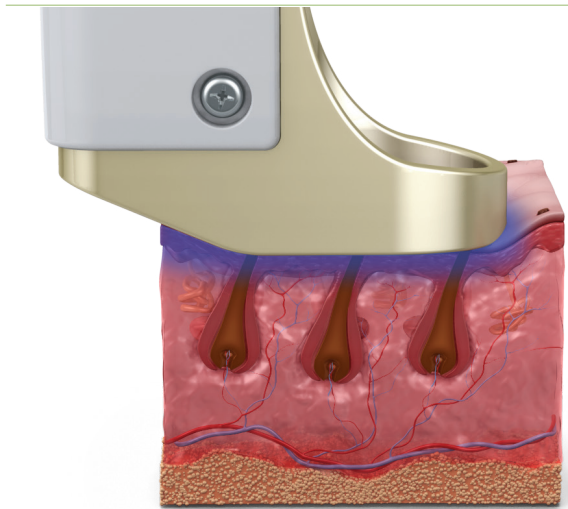
Superior Safety and Efficacy

To effectively target deep follicular structures and deliver energy more efficiently, excel HR utilizes index matching and compression via sapphire cooling contact. The result? Enhanced hair reduction efficacy using less fluence with improved patient comfort.



Modern Ergonomics

Modern ergonomic design delivers a more refined handpiece that feels like an extension of your hand. Say goodbye to bulky handpieces awkwardly paired with external chilling hoses, lasers with long warm-up times and constant re-calibration, limited parameters, and fragile fiber delivery.



Comfort Before, During & After

Epidermal protection is of heightened concern when treating darker skin types—contact cooling is preferred due to its parallel cooling abilities.⁴

excel HR's sapphire contact cooling offers continuous cooling before, during and after each laser pulse maximizing patient comfort and minimizing risk of under-cooled and over-treated areas—the epidermis is protected with each and every pulse.

Economic by Design

Modern design brings economic efficacy.

What is your true cost of ownership?

CUTERA proudly offers the excel HR system with an unmatched, comprehensive bumper-to-bumper warranty—with NO running expenses.

Performance & Efficiency

- High-performance dual wavelength laser system (755/1064)
- Proprietary truPulse™—Nd:YAG technology
- Real-time calibration—instant access to all parameters without recalibration or delays
- Quick warm-up time and runs quiet and cool
- Reliable solid-state design

Versatility & Convenience

- Hair, vascular and pigment indications
- Motorized spot size adjust—no switching of fiber-optic assemblies
- Small footprint to fit any size practice
- Robust, extra-long 3 meter fiber for optimal reach and easy patient access

Value-add & Security

- NO consumables
- NO per click, per shot, per patient costs
- NO cost for damaged or broken fibers*
- NO cost for flashlamp replacement*
- One-year comprehensive warranty

Comfort & Safety

- Premium Sapphire Contact Cooling—before, during and after each pulse
- Adjustable temperature setting (4° - 20° C)
- Emits no chlorofluorocarbons (CFC's)
- Safe for all skin types

* While under warranty or service contract